

## *The Benefice of Badwell & Walsham*

**Priest in Charge:** Rev'd Philip Merry      01359 258806  
(philipmerry@hotmail.co.uk)      07526 271784

**Retired Priest :** Rev'd Pamela Robson      01359 258939  
(robsonpam@btinternet.com)

**Rural Dean:** Rev'd David Messer      01359 250239

**Benefice Readers:** Ian Jackson      01449 781392  
Freddie Montgomery      01359 240271

**Benefice Elders:** Janet Kerridge      01359 259563  
Jill Scarfe      01359 258849  
Andrew Strickland      01449 781487

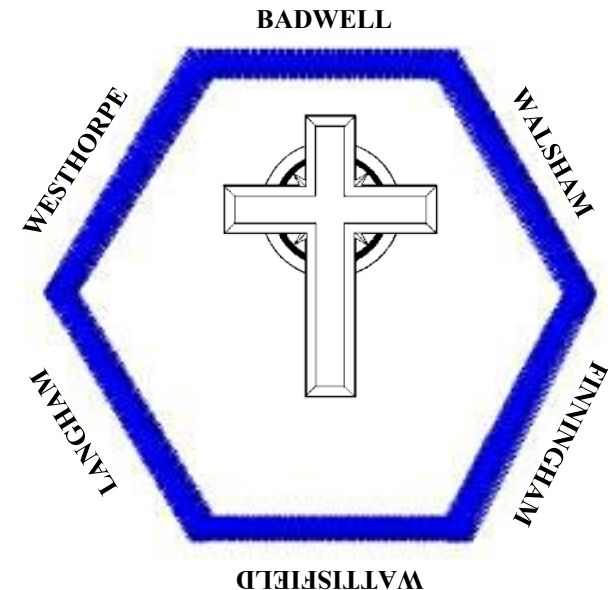
Please send your articles, jokes, fundraising event reports, puzzles, recipes and Church announcements for inclusion in this magazine (or anything else you fancy) to Rowena @ rowenagavars@gmail.com or ring 01359 259385

Hexagon is delivered to over 1500 homes  
Advertise your local business here. Reasonable rates.  
Contact Judith on 01359 258251 or judith@gharlow.plus.com

Advertise your fundraising or community event for free.  
Contact Rowena on 01359 259385 or rowenagavars@gmail.com

**Last date for items for inclusion in the next issue is  
Thursday 9th, November, 2017.**

## *The Benefice of Badwell & Walsham*



*Hexagon*  
*October-November 2017*

### Message from Liz Thornton

I am collecting stamps [any country, any value] for the Royal National Institute for the Blind [R.N.I.B] and Action on Hearing Loss [formerly R.N.I.D].

Please leave [1cm] around the stamps if possible and put them through my letter box at:

**Church House,  
The Street,  
Badwell Ash.**

Many thanks

### The NEW Westhorpe Village Hall

Available for hire for small groups, private functions, exercise classes etc.

Bright and airy main hall with blackout blinds.

Three sizes of tables, 80 comfortable chairs. Fully equipped kitchen.

Wifi connection and excellent audio visual system.

Hire rate - £8.00 per hour

(£7.00 for residents of Westhorpe and Finningham)

For further information and bookings please visit the website

[www.westhorpe.onesuffolk.net](http://www.westhorpe.onesuffolk.net)

or contact Alison Weston, Bookings Secretary on 01449 781490

## From The Rectory:

As we move through this season of autumn it is with an ever growing sense of the change in our weather. We still enjoy days which remind us of summer and yet increasingly we are reminded of the approach of winter, and ever darkening evenings. As the month of November comes it brings with it its own particular flavour. It is a month of mists and damp days, of bonfires and fireworks, but above all it is a month of remembering.

All Saints day is on the 1<sup>st</sup> of November, and is a day when we remember not just those Saints like St Francis and St Mary, but all the holy men and women both sides of the grave who have lived Christian lives. The Church calls them the Communion of Saints, and we will remember them in Walsham Church that morning, and afterwards I shall be sharing thoughts of Sainthood with the children of Walsham School.

On the 2<sup>nd</sup> November, on what is known as All Souls Day, we remember our own loved ones who have died; an opportunity to acknowledge and give thanks for every person dearly loved and missed. Whether a relative or friend has died recently or many years ago, it is important to acknowledge the grief that we carry with us, and the void that remains from their absence. (details of this service are to be found further on).

We continue the sombre theme with our Services of Remembrance within our various communities. We honour the memory of those who have died through conflict, by praying for both those who lost their lives, and for a future world peace.

During August this year Liverpool Parish Church held a memorial service for the fallen of the Liverpool Scottish Regiment during the 1<sup>st</sup> World War, and the focal point was Captain Noel Chavasse, of the Royal Army Medical Corps, attached to the Liverpool Scottish Regiment. Chavasse was the son of the Bishop of Liverpool, an academic, sportsman and doctor. When war broke out, Chavasse distinguished himself by his untiring and unselfish care of the wounded and dying, often under enemy fire (cont'd →)

### HEXAGON Advertising Rates

FULL PAGE	single issue £30	3 issues £60	6 issues £120
HALF PAGE	single issue £20	3 issues £40	6 issues £80
QUARTER PAGE	single issue £15	3 issues £30	6 issues £50

Non-profit-making organisation or fundraising event adverts are free.

Contact Judith on 01359 258251 or [judith@gharlow.plus.com](mailto:judith@gharlow.plus.com)

### HEXAGON COPY DEADLINE

The deadline for the next issue is **Thursday 9th November 2017.**

Please send items for inclusion to the Editor: Rowena Gavars ([rowenagavars@gmail.com](mailto:rowenagavars@gmail.com) / 01359 259385)



- Carpentry, Doors, Floors, Windows, Custom, etc
- Kitchen & Bathroom Fitting, Tiling, Refurbishment
- Plumbing, Sinks, Taps, Showers, etc
- Roofing & Roof Line Services
- Ground Works & Gardening, Patios, Fencing, etc
- Interior & Exterior Decorating
- Plastering, Skimming, Rendering inc Lime Render
- Electrical Indoor and Outdoor

**Tel: 07535 133965**

**Tel: 01449 781813**

**A Fully Insured & Dependable Service**



## **P.SMITH PROPERTY MAINTENANCE HANDY MAN**

Carpentry, Windows, Doors, Fencing,  
Gutters, Plumbing, Plastering, Ect.

For all your property needs

Large or Small

Over 30 years experience

**Free Estimates CRB/DBS & Public liability certificate  
available on request**

Call Paul on

Westhorpe 01449 782958 or 07961838256

## **Lives Remembered**

**David Bell**

**2nd October 1945 - 5th July  
2017**



A recent but well known resident of Finningham, David Bell was born in Jarrow and brought up in a lively household with five siblings. He attended the Jarrow Grammar School, his creative, imaginative talents already emerging to the entertainment of family and school pals.

The swinging 60s found him in London, working for British Rail, before returning to the North East to take up a career in the Merchant Navy, rising through the ranks to Master Mariner. He was mostly a "China Sea Man", but travelled throughout the world (as his store of amusing anecdotes revealed). In 1971 he met Marion in South Shields while studying for his "tickets" and in 1972 they wed. After a period together at sea, they started a family, James in 1975 and Jeffrey in 1979. It was time to come ashore as a family man, achieve a degree in Nautical Studies, and begin lecturing at the renowned Marine School in South Shields, where he became a popular teacher.

During the 70s and 80s, David had many interests, always encouraging in his boys a love of books and knowledge. He ran marathons and half marathons with no training but amazingly good times. He had a model railway phase much to the delight of the boys. His lovely singing voice blossomed on the North Eastern folk scene, adding dialect poetry writing to his talents. Family camping and walking holidays were enjoyed and recorded on his trusty video equipment brought back from travels to Japan. David also brought home several home computers which helped his sons gain a head start in the world of technology.

In the late 90s, he left the Marine School to take up a role as Local Historian and to study Renaissance Art with the Open University. He wrote many books on various North Eastern historical topics which developed further into giving talks and song recitals for the entertainment of History Groups, U3As and of course WIs. (These were becoming popular here in Suffolk with "Singing Sailors" and "Ireland in Song".)

(cont →)



**Local Caring Independent**

24 Hour Personal Service \* Private Chapel  
\* FREE Parking

[www.andrewbingham.co.uk](http://www.andrewbingham.co.uk)

**01449 771666**

The Nutshell, Milton Road South, Stowmarket,  
IP14 1EZ



**GRAHAM  
STAFF**



## LAWNMOWER SERVICING AND REPAIRS

EXPERIENCED ENGINEER

QUICK TURNAROUND

Walsham-le-Willows

Tel 01359 259650



**G HUBBARD**

### Building and Groundworks

25 years experience  
new builds, extensions  
plastering & tiling  
roofing, fascias & guttering  
re-pointing  
concreting  
landscaping & patios  
driveways, fencing & gates etc.

Free quotations  
Call Gavin

07899 835781 / 01359 252311



### WATTISFIELD WOOFERS

*I believe in a bespoke and personal service,  
whereby I will care for your Dog as I do my own  
and ensure it's individual needs are met.*

**A DOG WALKER YOU CAN TRUST AND WHO WILL  
GIVE YOU PEACE OF MIND**

- Free Initial Consultation
- 30 to 60 minutes Walking Times - £6/£10
- 7 Days a Week - (Surcharge For Weekends and Bank Holidays)
- Home Visits - can include feeding of Cats, checking on puppies and kittens
- CRB Checked

4 Croft Cottages  
The Street  
Wattisfield, Diss IP22 1NS

**Call Ros on 07930916314**  
[rosalind.cappleman@sky.com](mailto:rosalind.cappleman@sky.com)  
**50% off first walk for new clients**



**OPENING TIMES:** THURSDAY–SUNDAY 10AM–4PM.  
**SUNDAY LUNCH:** FROM 12PM. SUNDAY ROAST MENU CHANGES MONTHLY.

**CHRISTMAS FAIR:** SATURDAY 18TH NOVEMBER 10AM-3PM  
**STALLS AND REFRESHMENTS**

VINTAGE CHINA AND GLASS - HAMPERS–SOFT FURNISHINGS–  
HANDMADE CHRISTMAS CAKES–LOCAL FUDGE  
CHRISTMAS WREATHS–TROPIC BEAUTY  
CHRISTMAS CRAFTS AND GIFTS  
PAINTINGS–USBORNE BOOKS–JEWELLERY  
HILARY AND ALICE FROM DISS

**A FAMILY RUN RESTAURANT AND FUNCTION VENUE LOCATED  
NEXT TO THORNHAM HALL**

THORNHAM COACH HOUSE, THORNHAM MAGNA, SUFFOLK, IP23 8HA  
TEL: (01379) 783373

EMAIL: [CONTACT@THORNHAMCOACHHOUSE.COM](mailto:CONTACT@THORNHAMCOACHHOUSE.COM)  
WEBSITE: [WWW.THORNHAMCOACHHOUSE.COM](http://WWW.THORNHAMCOACHHOUSE.COM)

## WATTISFIELD COMMUNITY CENTRE

**What's on:**

Monday: Dog training 6-8pm

Tuesday: Coffee Morning 10am-12

Tuesday: Badminton 7.30-10pm

Wednesday: Yoga 10.30-11.30am and 6-8pm

Thursday: Carpet bowls 7.30-9.30pm

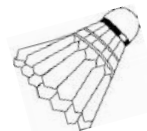
Anyone wishing to hire the hall or for further information  
please visit [www.wattisfield.org.uk](http://www.wattisfield.org.uk) or call 07539 352722

**Social Evening with Ross Pinder and live music from  
The Decades**

Saturday 9th September from 7.30pm.

Tickets £10 on door or £8 in advance. Contact Irene: 07539 352722

Date for your Diary: 50/50 Auction Saturday 4th November







## CCS CLEANING & MAINTENANCE

Window Cleaning (Traditional / Reach and Wash)

Cladding / Gutter Cleans

Jet Washing (Driveways, Patios and Decking)

Regular House and Office cleaning

End of Tenancy / Spring Cleans

Estate Management / Communal Cleaning

Property & Garden Maintenance

**DON'T DELAY CALL TODAY FOR A FREE  
NO OBLIGATION QUOTE  
01359 240440 / 07970 040581**

Or email at [info@ccsmaintenance.uk.com](mailto:info@ccsmaintenance.uk.com)  
[www.ccsmaintenance.uk.com](http://www.ccsmaintenance.uk.com)

Over 20 Years

Fully Insured

Uniformed Staff

Experience

## FORTHCOMING SERVICES

**All Souls Day - Thursday November 2<sup>nd</sup>**

There will be a service at 7.00pm in St Mary's Church **Walsham** to remember the departed. This will be a short simple said service of Compline during which the congregation are warmly invited to light candles in memory of family and friends no longer with us. Names of the departed will be read out and whether or not you wish to attend the occasion you are welcome to pass on names to myself or the Churchwarden (Janet), and I will have them read out during the service. Philip.

### Services for Remembrance

There will be a Service of Remembrance for the staff and pupils of Walsham-le-Willows CEVCP School in Walsham Church at 9.30am Friday 10<sup>th</sup> November; **ALL** are warmly welcome.

On Saturday 11<sup>th</sup> November a short Act of Remembrance will take place at the Walsham War Memorial; please gather by 10.50am.

Remembrance Sunday 12<sup>th</sup> November Services will begin at 10.50am at the Respective War Memorials of **Finningham, Walsham and Westhorpe**, followed by services in church.

There will be a short Act of Remembrance in **Wattisfield** Church at 10.50am on Sunday 12<sup>th</sup> November.

**Please note** that the Service of Remembrance in **Badwell Ash** Church will be at **10.15am in the church**, followed by an Act of Remembrance at the Village War Memorial at **10.50am**. All are warmly invited to one or both, and refreshments will follow in the Village Hall, courtesy of their committee, please do come along. Philip.

### Stir-up Sunday and Christ the King

On Sunday 26<sup>th</sup> November there will be an **ALL-AGE** 10.00am service in **Finningham** Church to celebrate Christ the King and remember the tradition of 'Stir-up Sunday.' This is a very informal service when Christ the King Crowns can be made, along with Advent Calendars and the traditional Christmas Pudding will be stirred.

There will be informal worship, refreshments and Christian Fellowship on offer; **ALL** ages are warmly invited.

(cont'd →)

## **Theobald's Restaurant Ixworth**

### **Opening Hours**

**Lunch Friday and Sunday, Dinner From Tuesday to Saturday**

**For current menus see our website [www.theobaldsrestaurant.co.uk](http://www.theobaldsrestaurant.co.uk)**



**Tel 01359 231707  
68 High Street Ixworth IP31 2HJ**



## **Independent BMW & Mini Specialists**

Independent BMW & Mini Specialists providing a full range of servicing and repairs. Considerable savings compared to BMW dealer prices without having to compromise on quality

**FOR ALL MAKES OF CARS**  
MOT tests, Servicing and Tyres

Competitive prices with excellent facilities  
While you wait appointments available

**WE HAVE MOVED TO NEW PREMISES**

3 Sicklesmere Road, Bury St Edmunds, Suffolk, IP33 2BN  
01284 754921

**[www.warnemotorsbury.co.uk](http://www.warnemotorsbury.co.uk)**

## **From the rectory (con't)**

Chavasse was awarded the Military Cross and then became the only man to receive the Victoria Cross twice during the 1<sup>st</sup> World War. After receiving his first VC, his father remarked; 'You have been known so far as the son of the Bishop of Liverpool: I shall be known henceforth as the father of Captain Chavasse.' His second VC was awarded posthumously.

The Chavasse family were Evangelical as well as sacramental and pious. One of Noel's letters to home read; 'At midday I rushed off and attended Holy Communion in a ruined church. There were a lot of men and officers there and it was really a very impressive sight to see them kneeling so reverently and expectantly to receive the sacrament.' At both the memorial service in 1917 and again this year, Noel's favourite hymns were sung; 'Just as I am,' and 'Praise to the Holiest,' both show a profound acceptance of salvation through Jesus Christ. It was said of Noel; 'He was a man of valour because he was a man of God. He might have been a great a surgeon; he might have been a really great clergyman and medical missionary, such was the vision that floated before his mind from boyhood; but he was already a great Christian.'

Whilst we mourn past horrors, we need to consider the part we are able to play in doing 'all that makes for peace and builds up our common lives.' As Christians we are mindful of the two critical commandments to love God and to love our neighbour. We must question our own and others' prejudices and fears, and seek to engage positively with those with whom we share the freedom to live and work that has been fought for at so great a cost. So let us pray for peace, work for peace, and engender peace in all that we think, say and do.

With every blessing

**Philip**

## **DEANERY NEWS**

### **Elder Training**

Thursdays 9th and 16th November 1.30-5pm. All Saints Church Bury St Edmunds  
Contact Lesley Steed for further details: 01473 298510

**Branches at:**

Bury St Edmunds 01284 701444  
Newmarket 01638 662253  
Haverhill 01440 702007  
Long Melford 01787 370773

swayne & partners



**veterinary surgeons**

We are a four branch small animal practice aiming to provide a traditional family service for you and your pets to the highest level of clinical care. Our services include:

- Out of hours emergency service 7 days a week both for our branches and other local vets.
- Our Bury St Edmunds surgery is open until 10pm each weekday.
- All our surgeries are equipped with digital x-rays, endoscopy, lab machines and much more.
- We also provide free evening talks for clients and non clients.

Please look at our website [www.swaynevets.co.uk](http://www.swaynevets.co.uk) or contact us if you have any questions. Find us on Facebook & Twitter.

## *Cakes For All Occasions* by Sharon Castro

BESPOKE HAND MADE WEDDING & CELEBRATION CAKES



Beautiful cakes at realistic prices.

All our cakes are hand made using only the finest organic ingredients and local free range eggs. Gluten free also available.

Call us free on 0800 024 8540 to make a no obligation, free of charge appointment to discuss your wedding or celebration cake.

## *Village News*

### **BADWELL ASH**

Friday 20th October, **Quiz Night**. 7pm in Village Hall. Proceeds in aid of St Mary's Church and East Anglia Air Ambulance. £6 per ticket. Maximum teams of 4. Ploughman's Supper included. Tickets from Badwell Ash Post Office or call 01359 259428 / 258641 \*\*\*

### **WALSHAM-LE-WILLOWS**

Saturday 11th November, 7.30pm, Walsham Drama Group presents **A Celebration of Letters**.

Saturday 18th November—Monday 20th November, **Walsham Arts and Crafts Exhibition**, 1pam—6pm. Priory Rooms.

### **WATTISFIELD**

Saturday 21st October, **Car Boot / Table Top Sale**, 10-12 @ Wattisfield Village Hall. All pitches £5. tea and coffe and light refreshments available. Contact Irene on 07539 352722 or 01359 251696.

Saturday 4th November, **50/50 Auction**. Starts at 2pm. Viewing from 12 noon. Contact Irene on 07539 352722 or 01359 251696 or email [bookings@wattisfield.org.uk](mailto:bookings@wattisfield.org.uk)

\*\*\*See event posters for further details.

### ***DID YOU KNOW.....?***

Fireworks in one form or another, have been around for at least 2,000 years. One enduring legend has it that fireworks were invented by a Chinese cook, who was working in an outdoor kitchen.

The first recorded fireworks in England were at the wedding of King Henry VII in 1486.

Dreaming about fireworks means that you like to be the centre of attention and are showing off to others. It also symbolizes enthusiasm and exhilaration.



## LOOKING TO SELL OR JUST CURIOUS TO KNOW HOW MUCH YOUR HOME IS WORTH?

For a valuation telephone 01284 755552  
or email [sales@richardgreen.uk.com](mailto:sales@richardgreen.uk.com)

*All valuations are treated in the strictest confidence and  
are without charge or obligation*

RG

RICHARD GREEN  
.UK.COM

### Forthcoming Services (Cont)

#### Christingle Services

The following Christingle services will take place during the month of December to which **ALL** are warmly welcome;

**3<sup>rd</sup> December 10.00am Walsham Church**  
**7<sup>th</sup> December 9.30am Walsham Church Walsham CEVCP School**  
**7<sup>th</sup> December 11.00am Walsham Church Walsham CEVCP School**  
**10<sup>th</sup> December 10.00am Badwell Ash Church**

If anybody can offer help with preparation, refreshments or just being in attendance to assist please speak with Denise.

**There will be a service of Compline at 7.00pm on Advent Sunday 3<sup>rd</sup> December in Walsham Church, these will be followed by other Compline services across the Benefice during Advent; details later.**

Compline is a quieter, more reflective and traditional contemplative service, with its origins in the Monastic tradition of the 7<sup>th</sup> Century.

Services will last no longer than 20 minutes; you are most warmly welcome during the season of Advent



#### URGENT MESSAGE - GLASSES FOR THE 3RD WORLD.....

I am sure that many of you have those unwanted/old/out-of-date pairs of glasses lurking in a drawer - if you have - then please help for they are in great demand by Optician's who carry out voluntary work overseas.

By answering this call for help you will be helping other in their very Important work...so thank you.

Please leave them at the back of the church in Walsham or Badwell Ash.

Freddie





## GISLINGHAM PLAYGROUP

We provide a safe, warm, friendly and caring setting for children aged 2-5 years, in a brand new purpose built building on the same site as Gislingham CEVCP School, with whom we work closely to provide an excellent education.

**“Children’s welfare, learning and development is fully supported by the highly motivated staff” Ofsted 2012**

Please visit our website [gislinghamplaygroup.com](http://gislinghamplaygroup.com) or phone us on 01379 788934



Feeding into

## GISLINGHAM CEVCP SCHOOL



We are a small and friendly village primary school that received an Outstanding grade in the 2012 Ofsted inspection.

**“Pupils make outstanding progress through the school because teaching is outstanding. Teachers inspire pupils to succeed and to share responsibility for their learning” Ofsted 2012**

Visit our website [gispalfederation.com](http://gispalfederation.com) Contact us on 01379 783283

## Langham Clinic.

Holistic Beauty & Complementary Therapies

Specialised treatments performed by highly trained & experienced therapists.

Waxing

Skin Tag Removal

Acupuncture

Electrolysis

Thai Yoga Massage

LaStone Therapy

Reflexology

Red Vein Treatment

Dr. Hauschka

Ear Candling

Manicure & Pedicure

holistic facial & body treatments

Aromatherapy

Indian Head Massage

**25% OFF**

Your first treatment for new clients

TREATMENT  
ROOM HIRE

Everything possible at Langham Clinic is organic, sustainable & carbon neutral.

[www.langhamclinic.co.uk](http://www.langhamclinic.co.uk)

Langham Grange, Langham, IP31 3EE

**Tel: 01359 258 700**

## Upstairs

## Downstairs

### A PREMIER CLEANING SERVICE ...bringing a sparkle into your home

- Regular housework
- One-off / Spring Cleans
- Trained uniformed staff
- Safe, secure and insured
- No hidden administration charges

Telephone: *Gigi Wadham-Smith*  
on 07580314010

Rookery Barn, Rookery Lane, Walsham-Le-Willows, IP31 3BD  
Head Office: 01672-541177

## Stuart Walker

### Decorating, Painting and Refurbishments

A locally based company offering an honest and reliable service.

Painting—Decorating—Refurbishments—Repairs

All work considered indoors and out!

Fully insured and free quotations provided

Please contact Stuart on: 07711606464 or [stuma1@hotmail.co.uk](mailto:stuma1@hotmail.co.uk)

### DSR PROPERTY MAINTENANCE

#### GENERAL BUILDING AND PROPERTY REPAIRS

New builds, Extensions, Garage, Room conversions, Roof repairs

Concreting, Patios, Walls, Re-pointing, Brickwork,

Gutter repairs, Fencing, Sheds,

Wall and Floor Tiling

Painting and Decorating

For free estimations call Dean on 07968 483055 / 01359 242438

Pay and Play Memberships  
from £35 per year  
All Inclusive Memberships  
from £19 per month

Facilities available include:

- 4 Court Indoor Tennis Centre
- 2 Seasonally Covered Floodlit Tennis Courts
- Fitness Suite
- Strength and Conditioning Suite
- 25m Heated Indoor Swimming Pool
- 6 Tennis/4 Netball Outdoor Courts
- 6 Badminton Court Sports Hall
- Swing Studio

Available for everyone to enjoy and use

**Culford**  
Sports & Tennis Centre

Available to members and non-members:

- Weekly Swimming and Tennis Lesson Programmes
- Adult Tennis Sessions
- Sports Activity and Tennis Schemes every school half term and holiday from £28 per day



01284 385370 csc@culford.co.uk www.culford.co.uk/csc

Wickhambrooke ad march 17.indd 1

16/03/2017 10:25

**M&TJ'S**

GARDEN & LANDSCAPING SERVICES

Garden Clearance  
Grass/Hedge Cutting  
Block Paving  
Patios  
Fencing  
Decking  
Firewood

Driveways  
Turfing  
Treework  
Mini Digger with Driver  
General Building Work  
Groundwork

Phone: 01359 231589

Mobile 07776 301681 / 07881 814661

e.mail admin@mtjs.co.uk

www.mtjs.co.uk



## WATTISFIELD VILLAGE HALL CAR BOOT / TABLE TOP SALE

Saturday 21st October

10am—12 noon

Come and join us for tea and coffee and light refreshments

To book your pitch call 07539 352722 or 01359 251696.

All pitches £5

## Walsham Poppy Project



We have a plan to produce a spectacular display of knitted and crocheted poppies in St Mary's Church, Walsham during the Remembrance period in November.

If you are interested in knitting or crocheting and would like to help, please call Jan (259653) or Fiona (258223) for more details



## WESTHORPE ART CLUB

An opportunity to join a group of people with a range of skills who want to draw or paint on a regular basis.

Escape from the distractions of home, swap ideas and join a friendly group.

Come and give it a try!

Fortnightly on Mondays from 2—4 pm @ Westhorpe Village Hall.

Contact Paul Weston on paulwestonarchitect@gmail.com

## 50/50 AUCTION

Saturday 4th November starting at 2pm.

Viewings from 12 noon.

Anyone wishing to place items in the auction please come along on Friday 3rd November between 3pm and 6pm or Saturday 4th November between 9am and 11am.

Contact Irene on 07539 352722 or email bookings@wattisfield.org.uk







Home Repairs  
Maintenance  
Kitchens  
Bathrooms  
Tiling  
Pressure Washing  
Flat Pack Assembly  
Decorating  
Shelving  
Odd Jobs

**No job too small**

**Call me today for a free quotation**

**Professional Service  
Fully Insured**

**Nigel:**  
**07765400464**  
**nedsolutions@outlook.com**

**N.E.D Solutions**  
Home Maintenance & Installations

nedsolutions@outlook.com  
07765400464



**REWTS**  
TREES AND GARDENS



Tel: 0782 5253 720  
Email: [info@rewtstreesandgardens.co.uk](mailto:info@rewtstreesandgardens.co.uk)  
[www.rewtstreesandgardens.co.uk](http://www.rewtstreesandgardens.co.uk)

Qualified tree surgeon & horticulturist

Honest reliable service offering:

- ☐ **Tree surgery:** from light pruning to large tree removal.
- ☐ **Garden landscaping:** from small back gardens to large estates.
- ☐ **Garden maintenance:** from a little weeding to a major clearance.

**Qualifications & portfolio  
available for viewing**



**Ruth's Dog Grooming  
& Day Care**

**Ruth Babington**  
[www.facebook.com/ruthsdogs](http://www.facebook.com/ruthsdogs)

01359 232400  
07733 304743  
[ruthsdogs@btinternet.com](mailto:ruthsdogs@btinternet.com)

Breachwood, The Street  
Stowlangtoft  
IP31 3JN



**MG Timber Build**

For all your garden structures and projects specialising in:

Sheds / Fencing / Gazebos / Summerhouses / Log Cabins / Garden Offices / Decking / Raised Beds & Borders / Kennels & Hutches / Water Features / Planters / Greenhouses / Car ports & Garages / Log Stores / Aviaries / Seating / Gates / Pergolas / Exterior Lighting / Ponds / Workshops / Garages / Stables

I can make any bespoke size of the above to your specification or I can install any pre-purchased item. Exterior electrical work completed by fully qualified electrician.

Additional services available at competitive rates:

Grass cutting, jet washing, gutter cleaning, window cleaning, flatpack installation.

For a free estimate or just to discuss your ideas & requirements please call:

Mark on 07921 954323



This trade  
since 1976

**Domestic  
appliance repair,  
supply and  
installation**



Telephone  
**01449 781599**  
Mobile  
**07596 744682**

No VAT

Hilldrop, Wickham Road, Finningham,  
Stowmarket, Suffolk IP14 4HT

**"THE ORIGINAL DOUG"**  
FORMERLY TRADING FROM FINBOW'S YARD

Email: [daiken@btconnect.com](mailto:daiken@btconnect.com)

**K F CLEANING**



**Domestic cleaning service**

Professional service guaranteed

Ensure your home remains clean and tidy  
without compromising your time

**Fully Insured**

Call me now for your requirements

[kevin.flood2@btopenworld.com](mailto:kevin.flood2@btopenworld.com)

**01449780146  
07703780330**

**ADRIAN SAYER  
OIL HEATING SERVICES  
EST. 1999**

**BOILERS AND  
COMPLETE SYSTEMS**

**SERVICED AND  
REPAIRED**

**BREAKDOWNS  
ALWAYS A PRIORITY**

**01359 220119  
07956 094433**



# Strands

## HAIR SALON



**IXWORTH**

I have over 20 years Experience in Cutting & Styling Ladies & Gents hair

### OPEN HOURS

Tuesday, Wednesday, Thursday  
8.30am - 7.00pm

Friday  
8.00am - 6.30pm

So for a professional & friendly service phone Sarah on

**01359 230300**

Appointments not always necessary



## M A Heating Services



- \* Oil, Gas and LPG boiler servicing, replacements and repairs
- \* Repairs to central heating system faults i.e. pumps, programmers and cylinders
- \* Servicing and repairs to Rayburn, Aga Stanley and Esse's
- \* Landlord's Certificates

**Telephone: 01379 783427**

Wickham Gate, High Street, Gislegham, Suffolk, IP23 8JD

## W.J.C PAINTERS

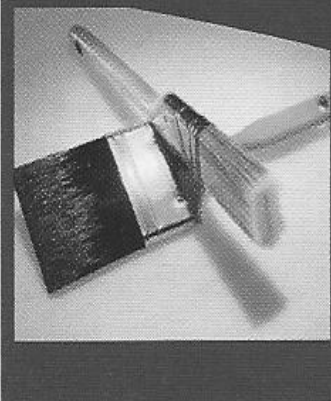
William Crocker

Professional Painter and Decorator.  
Interior and Exterior work, with  
free quotation.

Mobile: 07814 240840

Email: [wjcpainters@hotmail.co.uk](mailto:wjcpainters@hotmail.co.uk)

[www.wjcpainters.co.uk](http://www.wjcpainters.co.uk)



## cuttin

room.com



unisex hair salon  
&  
tanning booth  
**01359—251083**

**job vacancies available  
for experienced, professional stylists**



PAUL MITCHELL  
PROFESSIONAL SALON PRODUCTS

BED  
HEAD  
TIGI

MATRIX  
IMAGINE ALL YOU CAN BE







# LAMBERT'S SERVICE STATION LTD

Shop Green, Bacton, Stowmarket, IP14 4LG Tel. 01449 781260 Mob. 07834 778116

**MOTs while you wait**

**Recovery Service  
and Home Starts**

**Welding**

**Accident, Bodywork Repairs**

**Engine Management  
Lights**

**Service all Makes and Models**

**Tyres and Batteries  
Stocked**

**ABS**

**Air Conditioning**

**Engine Diagnostics  
and Fault Finding**

**RING TODAY FOR A FREE ESTIMATE ON ANY WORK NEEDED**

Opening Hours - 8.30 - 5.30 Monday to Friday and 8.30 - 12.30 Saturday

We have a fully equipped workshop where all manner of repairs can be undertaken

An MOT testing station and a Body Shop where we can undertake

Insurance accident repairs, general repair work and re-sprays.

We also operate a recovery service which includes Home Starts.

We are one of the few remaining rural Petrol Filling Stations  
and offer forecourt attended services.

[www.lambertsservicestation.com](http://www.lambertsservicestation.com) — [lamberts.l@btconnect.co.uk](mailto:lamberts.l@btconnect.co.uk)



or Find us on **Facebook**

[www.facebook.com/lambertsservicestation Ltd](http://www.facebook.com/lambertsservicestation Ltd)



*A date for your diary*

Walsham Drama Group presents:

## **A Celebration of Letters**

Saturday 11th November 7:30pm

Remembrance Day approaches and talented crafters of Walsham-le-Willows and it's surrounding villages are preparing to commemorate Armistice Day with a profusion of beautiful handcrafted poppies set to adorn St Mary's Church. To add to the occasion, Walsham Drama Group are planning to present an evening of letter readings. The letters to be read will be poignant, sometimes amusing, thought provoking, painful and tender. They will have been written by husbands, wives, sweethearts, mothers, fathers, sons and daughters, who speak of wisdom, love, loyalty, courage, and separation.

Letters from statesmen, generals and other leaders articulate concerns and strategies. All have one thing in common: they were written in times of conflict. In an era before twitter, emails and often even telephones, when the future was uncertain, a letter provided an opportunity to write about feelings of love and hope for the future.

Please join us for what we hope will be a memorable evening celebrating the joy, pain, wisdom and humour that characterise this most intimate of literary forms.

Admission will be £5 on the door. All profits will go to the British Legion Poppy Appeal

# DJS BLINDS & CURTAINS

- ✓ ROLLERS
- ✓ VERTICALS
- ✓ VENETIANS
- ✓ ROMANS
- ✓ SHUTTERS
- ✓ CURTAINS

A vast range of fabrics to choose from.

All made to measure.

**FREE** MEASURING SERVICE  
FITTING ALSO AVAILABLE

Contact Dave:

**01449 672750**  
**07723 354601**

Unit 18, Stonham Barns, IP14 6AT  
**DJDJSNELLING@HOTMAIL.CO.UK**  
**WWW.DJSBLINDS.CO.UK**



## WALSHAM ARTS & CRAFTS Exhibition

Saturday 18th, Sunday 19th  
& Monday 20th November  
10am-6pm

Batik Wallhangings - Cards - Ceramics - Glass - Hand Spinning  
Hand Knitting - Jewellery - Metalwork  
Paintings in oil, watercolour, oil pastel & gouache & Prints

The Priory Room (next to the Church) Walsham-le-Willows IP31 3AB





## WESTHORPE HALL *Residential Care*

*For home from home care*

24 hour person centred care for persons 65 and over including dementia and respite care

Telephone 01449 781 691  
Email [office@westthorpehall.co.uk](mailto:office@westthorpehall.co.uk)  
[www.westthorpehall.co.uk](http://www.westthorpehall.co.uk)

Have questions ...



We are here to help

mcp  
SOLICITORS

[www.mcp-law.co.uk](http://www.mcp-law.co.uk)  
Cage Lane, Thetford,  
Norfolk, IP24 2DT

01842 756100

Business | Crime | Dispute Resolution | Employment | Family | Property | Wills & Probate

Also at Peterborough, Wisbech and King's Lynn

## ARBORICULTURAL AND LANDSCAPE SOLUTIONS

ALL ASPECTS OF TREE SURGERY  
SOFT AND HARD LANDSCAPING  
MAINTENANCE AND LAWN CARE  
DOMESTIC & COMMERCIAL CONTRACTS  
FULLY INSURED  
NPTC QUALIFIED



# GREEN SCENE

CONTACT FOR FREE QUOTATIONS AND ADVICE

01359 298141 / 07866 866880  
[INFO@GREENSCENETREESURGERY.CO.UK](mailto:INFO@GREENSCENETREESURGERY.CO.UK)

## West Suffolk Counselling

[www.westsuffolkcounselling.co.uk](http://www.westsuffolkcounselling.co.uk)

### PROFESSIONAL COUNSELLING SERVICE

Confidential counselling service to help with relationship problems, anxiety, depression, day to day difficulties or any personal issue you may be facing.

Registered member of the United Kingdom Council for Psychotherapy

Walsham-Le-Willows  
Bury St Edmunds  
IP31 3BD

Phone: 07792 635057  
Email: [westsuffolkcounselling@gmail.com](mailto:westsuffolkcounselling@gmail.com)



## THE MAPLE GARDENER AND LANDSCAPE

For a traditional garden service

Mobile: 07799 766910 Home: 01449 674255

### GENERAL GARDEN MAINTENANCE:

Hedges, borders prepared, dig over, mulching, planting e.t.c.

- TREE WORK lopping, re shaping etc
- CLEARANCE: strimming, small trees removed e.t.c.
- FENCING
- HARD SCAPING: removal of soil/re-levelling e.t.c.
- PATIOS: all shapes, sizes, small walls, brick pattern paths
- TURFING:
- PLANTING PLANS & GARDEN DESIGNS:
- PONDS created from scratch, re lined, cleared out, worked



Free quotes to most areas, all green garden waste removed, (at cost)



**CALL DAVID LEAVER**

**ON: 01359 240 252**

**FOR:**

**Custom made: Cupboards, Doors and Windows**

**Wardrobes and Vanity Units**

**Pipework casing, Stair Refurbishing, Shelving**

**Loft Ladder installation and Flooring**

**Glazing Repairs, Door Fitting, Security Locks**

**Work carried out on New and Period properties**

**Time-served apprentice, Dust sheet and Vacuum**

**NO VAT CHARGED**



Jake Ward

### Residential & Commercial

New Installations - Rewires - Maintenance

Testing - Fault Finding - Lighting - Power

Consumer Unit Upgrades - Data Cabling

**T: 01379 897082 / 07541 278736**

[jkwardelectrical@outlook.com](mailto:jkwardelectrical@outlook.com)

[www.jkwardelectrical.co.uk](http://www.jkwardelectrical.co.uk)



Here for you  
every hour  
of every day

Meredith Greengrass

9 Marriotts Walk, Stowmarket

**01449 612765**

15 Ipswich Street, Stowmarket

**01449 709860**

2 Hospital Road, Bury St Edmunds

**01284 754017**

*It's the little things that count*  
[www.eastofengland.coop/funerals](http://www.eastofengland.coop/funerals)



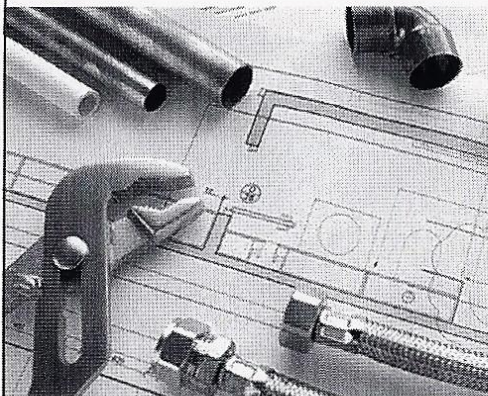


www.gasengineersburystedmunds.co.uk

# WILLOWSERVE LTD

## Plumbing & Heating Services

We provide Plumbing and Heating services in Bury St Edmunds, Stowmarket, Thetford, Diss, Sudbury and surrounding areas and cater to the general public and small, commercial companies. We are Worcester Bosch approved boiler installation, boiler servicing and we are also Gas Safe, OFTEC and CIPHE registered. We are City and Guilds qualified in energy efficiency, covering all aspects of Plumbing and Heating.



- Plumbing and Heating
- Central Heating
- Underfloor Heating
- Replacement Boilers
- Boiler Servicing
- Boiler Installation
- Hot Water Cylinders
- Oil, LPG and Gas
- Landlord gas certificates
- Bathrooms, including tiling
- Gas appliances
- Water Softeners

**Checkatrade**  
Where reputation matters

**CALOR**



**Tel: 01359 259886 • 07771 557937**

Email: [willowservice\\_ltd@hotmail.com](mailto:willowservice_ltd@hotmail.com)

16 Grove Park, Walsham-le-Willows, Bury St Edmunds, Suffolk IP31 3AE



## Haughley Hoofers North West Clog Dancers

Why not have a go at something a bit different?

North West Clog Dancing has its origins in the spinning and weaving towns of Lancashire and Cheshire. The dances were, and still are, performed in processions by the mill workers at festivals and holidays.

We always need more dancers (female) and musicians (both sexes). All you need is a basically good level of fitness. If you play a portable musical instrument bring it along. Our winter practices are on Sunday nights 7.30-9.30pm in Haughley Village Hall, near Stowmarket from 17<sup>th</sup> September.

Come and have a go (it's free!) or ring 01449 673518 to find out more.

Website: [www.haughleyhoofers.org.uk](http://www.haughleyhoofers.org.uk)

Tickets  
available from  
Badwell Ash  
Post Office

## QUIZ NIGHT

£6 per ticket

In aid of  
East Anglian  
Air Ambulance  
and  
St Mary's  
Church

Friday  
30th October  
7pm

Ploughman's  
Supper included

Maximum  
teams of 4

BADWELL  
ASH  
VILLAGE  
HALL

## Countryside, Conservation & Tree Services

Tree Surgery, Tree Planting,  
Hedge Laying and Hedge Trimming, Fruit  
Tree Pruning, Leylandii Management,  
Turf Laying, Stump Grinding, Pond creation



*Wood Chip Mulch*

**Mark Bleay** BSc (Hons)  
Telephone : 01359 242 436  
Mobile : 07702 642 463  
Markbleay@btinternet.com

**£5,000,000 public liability insurance**  
**FREE QUOTATIONS**



**M. J. Hardwick**  
**Motor Repairs Ltd.**  
**Maple Lodge, Gislingham Road**  
**Finningham**

**All Vehicle type repairs and Maintenance, including:**  
**MOT Prep and Arrangement**  
**Servicing**

**Diagnostic Fault Reading**  
**Breakdown and Recovery**

**Air Conditioning**  
**Tyres, Batteries and Exhausts**  
**Welding and Bodywork**  
**Restoration Projects**

**Tel: 01449 781927 07801989357**  
**MJHardwick@BTconnect.com**

## WALSHAM LE WILLOWS CHURCH ORGAN

At the Epiphany Singers' concert in 2016 I asked the audience to become Organ Donors. On this occasion the request was not medical, but to support our project to replace the St Mary's church organ, damaged by water and slowly becoming irreparably damaged.

Walsham responded to this appeal with incredible generosity. The late Dr Russell and his family took a keen interest in supporting the future of the organ, and the irrepressible Ian Toulson undertook a cycle tour of every cathedral in mainland UK to raise funds.

During the interregnum, the PCC felt they could not justify placing the organ appeal ahead of the pressing need to be able to fund a priest for the Benefice, and the needs of the church fabric. Even though the project was temporarily suspended, the organ appeal fund continued to swell to its current amount just short of £30,000. Community interest in the future of the instrument has never been lost.

Now, at last, with a new vicar at the helm, and a (nearly) watertight church, we have news for all our generous supporters. A Porritt Organ, beautiful and appearing to be perfectly sized to replace our much-loved instrument, is available and, equally important, affordable. This organ has the approval of our team of organ experts, including David Hill, of the Epiphany Singers. It will have more variety of sound, and an electrified action. It should last for at least 50 years and probably many more.

There are still many formalities we must complete, as well as due consideration by all members of the PCC, before we can embark on the actual work of organ transplant, but we are very hopeful that mid 2018 will see the new Porritt organ in place.

Once the project is up and running, we hope to involve supporters with activities such as a trip to the organ workshop, and a talk about church organs.

On behalf of Rev. Merry and the PCC, many thanks to all who have supported this aspect of the church's future, and we shall keep you updated as the project becomes reality.

Matthew Lockyer





## Pearce's Pins

**Dressmaking & Upholstery  
Designs, Repairs, Alterations**

*Fabric samples and patterns available  
Agents for Smart Image Dry Cleaning  
and shoe repairs*

32/34 High Street, Ixworth  
Bury St Edmunds  
Suffolk IP31 2HH

**Tel: 01359 233017**

Tues—Fri 8.30am—3pm  
Sat 8.30 am —12 noon  
pearcespins@btinternet.com

## M.O.T. Due ?

Require a quick reliable  
professional service ?  
Services and MOT repairs  
also available

## Elmswell

Tests available for Cars, Small Vans & Transits up to 3.5 tonnes

### D.A.Bevan

The Work Shop, Grove Lane,  
Elmswell, Bury St Edmunds  
Suffolk IP30 9HN

We are Here



**Mot Hot Line 01359 244421**



## DAVID MARTIN MOTOR VEHICLE ENGINEER AND CAR SALES



Local, honest, friendly, reliable family run business  
(with over 60 years experience) offering car and light  
commercial vehicle repairs at competitive prices  
We are proud to be members of the Good Garage Scheme,  
check out some of our feedback @

**www.goodgaragescheme.com**

**NO WORK IS CARRIED OUT WITHOUT FULL CONSENT FROM THE CUSTOMER**

- MOT repairs
- Diagnostics
- Cam belts
- Exhausts
- Batteries
- Brake overhauls
- Courtesy car available
- Local recoveries
- Tyres supplied & fitted at very competitive prices (available same day if ordered before 12pm)
- **FREE** local collection and delivery from your home or work place
- **Air con. re-gas from £35** (plus VAT)

## MOT & Service

(Including vehicles still under main  
dealer warranty)  
FROM

**£130** (inc. VAT)

(Subject to oil spec/quantity and filter prices)

## All MOTs

**£45**

Class 4, 5 (minibus) & 7 (up to  
3,500kg) incl. Free retest

**Open 8am - 5pm Monday - Friday**

The dwastre Place, Station Hill, Thurston, Bury St. Edmunds, Suffolk IP31 3QU  
www.davidmartinmotorengineer.co.uk info@davidmartinmotorengineer.co.uk

**Tel : 01359 230536 Mob : 07808 508864**

## CHIMNEY SWEEP

### ECO SWEEP CHIMNEY SERVICES

- **NEW POWER SWEEPING METHOD USED FOR A MORE THOROUGH CHIMNEY CLEAN THAN BRUSHES**
- **INDUSTRIAL HEPA FILTERED VACUUM**
- **FULLY INSURED**
- **INSURANCE RECOGNIZED CERTIFICATES ISSUED**
- **SPOTLESS, RELIABLE AND FRIENDLY SERVICE**
- **ALL CHIMNEYS, WOODBURNERS, AGA, BOILER FLUES SWEPT**

**TEL: (01359) 232335**

## SM PEST CONTROL SERVICES

25 yrs exp  
NPTA MEMBER,  
PROFESSIONAL CERTIFIED  
PEST CONTROLLERS.

WASPS NESTS, HORNETS, BEES, RATS,  
MICE, SQUIRRELS, CLUSTER FLIES, FLEAS,  
MOLES, RABBITS, BED  
BUGS, CARPET BEE-  
TLE, MOTHS, WOOD-  
WORM,



LOCAL COMPANY  
FULLY INSURED  
VERY COMPETITIVE RATES  
FREE ADVICE  
PLUS MANY MORE NUISANCE PESTS

01359-232745/ 01284-220095  
INFO@SMPESTCONTROL.COM



*Book your preferred appointment time by visiting our website for:*

- **MOT appointment**
- **Vehicle servicing**
- **Air conditioning service**
- **Diagnostic check**
- **Order your tyres on line, book your appointment for fitting at your convenience**
- **Assisted payment plan** (call for details)

**[www.bakmorautoservices.co.uk](http://www.bakmorautoservices.co.uk)**

**Or call us on**

**01359 233524**

**Unit 3 Shepherds Grove Ind Estate, Stanton, Suffolk. IP31 2AR**

**Credit and Debit cards accepted**

Come and join friends in your local community to celebrate New Year's Eve in Westthorpe.

We will be sharing supper in our lovely new

village hall and dancing to local band  
**Nutz and Boltz**

Tickets are £5 which will include a glass of bubbly. December 31st, 8.00pm till 12.30am, bring a dish of food to share and your own drinks.

For tickets contact Clive Mees on 01449 780394 or [clive@waitrose.com](mailto:clive@waitrose.com)

### COMEDY CORNER

Bonfire Night is nearly upon us—here are some Bonfire funnies:

Q. How many safety inspectors does it take to light a bonfire?

A. One to light the match and three more to hold the fire extinguishers.

Q. How many Mafia hitmen does it take to light a bonfire?

A. One to light the match, one to watch his back and one to get rid of any witnesses.


Q. How many civil servants does it take to light a bonfire?

A. One to light the match and twelve more to fill in all the paperwork.

Q. How many Apple employees does it take to light a bonfire?

A. One to light the match and four more to design the T-shirt.





**Amanda Braham**  
 Maker of hand made Curtains, Blinds &  
 Soft Furnishings.

Willowcroft, Langham Rd,  
 Badwell Ash, Bury St Edmunds,  
 Suffolk IP31 3DS

01359 259752  
 07952883790

**Phil Laflin**  
**PLUMBING & HEATING**  
**General Repairs**  
**Tel: 01359 259677 or 07749 636 474**

**LITTLE WILLOWS PRE-SCHOOL**  
 Wattisfield Road, Walsham Le Willows

Open to children from **2 years** to 5 years old,  
 Monday to Friday 8.45am-2.45pm term time.


Morning and afternoon sessions available and  
 when combined provides full day care.

Highly trained staff, well equipped self  
 contained pre-school with fantastic fully  
 enclosed garden.

Friendly and safe environment for the children  
 to have fun and learn through play.

A member of the Pre-school Learning Alliance.

For more information or to arrange a visit please call the pre-school on 258702.




### Great Ashfield and Badwell Ash WI

October 12th Painting a Glass for Christmas  
 November 9th "Nothing Like a Dame" by Horry Parsons  
 December 14th Christmas Party

Visitors are always welcome to our meetings. Come along to Lord Thurlow Hall, Great Ashfield for 7:30 start. Contact Lyn for further details: 01359 259637

### Walsham le Willows and District WI

We were privileged to see a very admirable partnership at work at our July meeting, when we were visited by Margo Harrison and her black cocker spaniel Pebbles. Trained as a Hearing Dog for the Deaf, Pebbles and Margo have been together for two years and it is Pebbles' task to alert Margo, who is profoundly deaf, to every phone call, timer, door bell and fire alarm at home and at work. We saw a gentle but insistent nudge with the nose and an indication of the direction of the sound. Though seemingly dedicated to her role in our demonstration, apparently, occasionally Pebbles when not wearing her special harness or jacket, can be a bit of a flirt and she certainly took the crowd of WI members in her stride. We were intrigued to hear that since training relies on a reward system and since owners undertake to keep their precious helpers fit and trim, when demonstrating Margo saves a little of Pebbles' supper to use as reward. Spaniels and retrievers are well known for their hearty appetites! A working Dog for the Deaf will have a ten to twelve year career after which they deservedly usually retire but invariably stay with the family. Margo and Pebbles proved excellent ambassadors for this worth while charity.

Our August meeting was an exercise in brain agility. Eyes were popping and brows furrowed as Colin Hopper teased members with his little bit of magic and optical illusions. Deciding whether we were shown a duck or a frog, a hag or a young girl and whether it was the right way up became puzzling. The intricacies of perception and the easy fooling of one's brain were explained by Magic Circle member Colin with his display boards. The flower of the month competition was for a dahlia and members were proud to hear that their entry for the Suffolk West Federation of WIs' Coronation Cup for flower arranging had been judged the winner. WI President, Mary Bradley, was presented with a special flower arrangement in celebration of her 'special' birthday! Members will be enjoying a seaside trip to Aldeburgh shortly and will meet to run the WI tearoom at Walsham's Open Gardens Weekend on the August Bank holiday weekend.

At our September meeting on Wednesday 13<sup>th</sup> at 7.45pm in The Priory Room Walsham, we will learn more about the individuality of our finger prints with speaker David Smith and the competition will be for a homemade finger puppet.

## IPSWICH AND SUFFOLK CREDIT UNION

The Parish of Walsham-le-Willows has joined with the Archbishop of Canterbury in his initiative to offer an alternative to Pay Day Loan Companies.

The Archbishop of Canterbury has endorsed and promotes Credit Unions nationwide. We had visits from the Ipswich and Suffolk Credit Union during the year 2014. As a result we now have two Walsham-le-Willows Parish members as Credit Union Representatives for anyone in the Benefice with any interests.

They are as follows:

Fred Bloomfield  
1 Church View Cottage  
The Causeway  
Walsham-le-Willows  
Bury St Edmunds IP31 3AB  
Tel: 01359 258 596  
E:mail: [bloomfield644@btinternet.com](mailto:bloomfield644@btinternet.com)

Ann James  
The Thumbit  
Walsham-le-Willows  
Bury St Edmunds IP31 3BT  
Tel: 01359 259414  
E:mail: [thumbit@tecova.com](mailto:thumbit@tecova.com)

## TankChange Ltd.

### Suppliers & Installers of Oil Tanks

Family Business with Over 40 Years Experience  
Steel & Plastic Oil Tanks available  
Fully Insured OFTEC Registered Engineers.

Telephone: 01449 781210 (Out of Hours: 01449 781498)  
Mobile 07899 898720

Email: [Terry@tankchange.co.uk](mailto:Terry@tankchange.co.uk)  
Visit our Website@: [WWW.tankchange.co.uk](http://WWW.tankchange.co.uk)

***Discounts available to Parish Magazine readers***



## WATTISFIELD HARVEST AUCTION

### BID FOR LINC!

Our Harvest Thanksgiving weekend finishes with a flourish on the evening of Monday October 2<sup>nd</sup>, when we have a short service at 7.15pm followed by our traditional auction of the harvest gifts which have been decorating our church. The proceeds of the auction are for a different charity each year, and we try to find one that is particularly timely and/or close to our hearts.

This year we are supporting the **LINC charity (Leukaemia & Intensive Chemotherapy Fund)** which is a local cancer support charity that works to improve the care of patients who are receiving treatment within Gloucestershire Hospitals NHS Foundation Trust (where Jay Price's daughter Rosie has been treated for acute myeloid leukaemia in Cheltenham for the last 7 months). From financial grants to sky TV, Linc provides whatever is needed to make the long hospital stay more bearable. Linc is there to help from the time of diagnosis, throughout treatment and for as long as required.

Jay told us in the early days of Rosie's treatment how grateful they were for all the thoughtful things that Linc had provided, and how supportive the charity was, so we decided to put the proceeds of our harvest auction towards this very good cause. If anyone would like to join us on Monday October 2<sup>nd</sup> to swell our numbers – and the coffers! – you would be most welcome, and we always have a really enjoyable time.

But a word of caution; if you do come, don't expect too many bargains. You may find yourself paying silly prices for bags of sugar or carrots, but it's all in the spirit of the evening and for a very good cause!

(If you are unable to come, but would like to donate to LINC, our treasurer Andrew Wright (01379 898233) would be happy to accept donations, and will add them to the amount raised on the night.)

# Stanton Self Storage

*"Providing local storage solutions for Domestic and Commercial users"*

- Pallet box stored on racking (25 cu ft)
- Wooden warehouse container (250 cu ft)
- 8ft Steel container (Internal) (350 cu ft)
- 8ft Steel container (External) (350 cu ft)
- 20ft Steel container (External) (1172 cu ft)
- Trailer hire
- Forklift on-site
- Deliveries taken
- 24 hour CCTV
- 24 hour access to external units
- Domestic and small business users welcome
- Archiving

Why pay for space that you don't need?

## 01359 250554

f: @bigshedselfstorage.stanton

w: [www.selfstorage Stanton.co.uk](http://www.selfstorage Stanton.co.uk)

e: [mail@bigshedselfstorage.co.uk](mailto:mail@bigshedselfstorage.co.uk)

[selfstorestan@gmail.com](mailto:selfstorestan@gmail.com)

### Lives Remembered (cont)

In 2001, always seeking something new, David set off to Italy and bought a small mediaeval house in Northern Tuscany. Learning Italian was then essential, with Marion trying to keep up. They had happy times there, making many Italian friends.

In 2013, they decided what an adventure it would be to "Escape to the Country" after many years living in a seaside town. In January 2014, just as they moved to Finningham, their episode of the programme aired. Fame at last! They quickly settled into the community, David, after much persuasion, becoming Treasurer of our beautiful church.

It is so very sad that David's happy life here in Suffolk with Marion was cut short. He simply loved the countryside and became well known as a forager of fruits for jam-making, and precious wood for the fire. He will be much missed by his family and friends for his wit, forthrightness, love of life, companionship, and the twinkle in his eye.



### FINNINGHAM GARAGE SALES

Finningham PCC are very grateful to Pauline Goddard and Val Rowell for organising refreshments in the church at the annual garage sales held on Saturday 2nd September.

Thank you to everyone who baked cakes and scones and all those who helped in the church.

It was very successful and raised a grand sum of £371 in aid of the church.





# Suffolk Sweep



## Chimney Sweeping Services

As a member of the Guild of Master Sweepers  
I am committed to providing a professional service,  
ensuring your chimney is kept clean and your home safe.

My services include:

- § Sweeping open fires, all solid fuel appliances and gas and oil boiler fires.
- § Safety inspections and smoke testing
- § Carbon monoxide and smoke alarms supplied and fitted
- § Insurance company recognised certificates issued
- § Fully insured

The safety of your home is paramount and all services are carried out in strict accordance with current regulations and approved sweeping methods.

**Phone: 01449 737513**

Or text SWEEP to 07858 768162

9 Gedding Road, Drinkstone, Bury St Edmunds, IP30 9TD



## Restoration of Fine Antique Furniture

R A Castro  
BADA West Dean Diploma  
Post Graduate University of Sussex  
Full member of BAFRA  
(British Antique Furniture Restorers Association)

Restoration/conservation work is carried out sympathetically using traditional materials wherever possible. Works include:

- French Polishing
- Furniture Restoration
- Gilding
- Veneering
- Leather Desk Inserts

and many other restoration processes.



Collections can also be undertaken within most of East Anglia.  
For more details please contact Roger Castro on 01359 259643

## ELITE-FENCING & GARDEN CONSTRUCTION 365

Your garden projects turned into reality!

FENCING, GATES, DECKING, PERGOLAS, PATIOS, PATHS, BASES,  
TURFING, DEMOLITION, EXTERIOR PAINTING AND STAINING,  
GARDEN CLEARANCE, DRIVEWAYS RE-STONED  
GARDEN PROJECTS AND RESTORATION, REPAIRS, ODD JOBS.  
GENERAL LABOUR.

ALL TYPES OF OUTDOOR WORK UNDERTAKEN SMALL OR LARGE –  
Free Estimates.

CALL TREVOR ON 01359 221 128 – mobile 07761 651 567

[www.elite-fencing.co.uk](http://www.elite-fencing.co.uk) email [trevor@elite-fencing.co.uk](mailto:trevor@elite-fencing.co.uk)





Nexus Stoves offer a complete supply and installation service across a wide selection of traditional and contemporary woodburners, multi-fuel and pellet stoves. Our beautiful showroom is always filled with a varied display from top manufacturers such as AGA, Stuv, ESSE, Dean Forge and Chilli Penguin.

☎ (01379) 671 168      ✉ info@nexusstoves.co.uk  
Nexus Stoves, Maltings Barn, Hinderclay Road, Wattisfield, Diss,  
Norfolk, IP22 1NF



**4 Palmers Street, Walsham le Willows, IP31 3BZ.**

£800.00 per month (excl utilities and council tax)  
Two months' rent in advance

Assured shorthold tenancy

Three bedrooms

Upstairs bathroom

Sitting room

Kitchen

Conservatory

Large workshop/studio with water and electricity

Long garden

Greenhouse and small shed

Parking for two cars

Available from the middle of October 2017

Contact Sally Harrison, 01359 259923

## FROM THE REGISTERS

### Baptisms

Archie David Hubbard      21<sup>st</sup> May 2017      St Mary the Virgin Church  
Walsham-le-Willows

### Weddings

Oliver Mohinder Gill and Laura Elizabeth Simpson      8<sup>th</sup> July 2017      St Margaret's  
Church Wattisfield

Michael Owen Fleckney and Laura Rose Winch      29<sup>th</sup> July 2017      St Mary's  
Church Langham

Daniel James Pratt and Chantell Mary Woods      12<sup>th</sup> August 2017      St Margaret's  
Church Wattisfield

### Funerals

David Bell      26<sup>th</sup> July 2017      Cremation/Thanksgiving – Finningham

Sybil Hilda Boldero      22<sup>nd</sup> August 2017      Cremation - Westhorpe

## BONFIRE NIGHT WORDSEARCH



### Search Words

barrels  
bonfires  
Catesby  
Catholics  
Cellar  
conflicts

executed  
failure  
fireworks  
gunpowder  
Guy Fawkes  
November

Parliament  
plot  
Protestants  
soldier  
Tower  
treason

HEATING OIL  
01473 558854

**Badger Fuels**  
of BRAMFORD

HEATING OIL  
01473 558854



**Your Local Choice**

*order 100 to 900 litres*

**Best Quality Oil**

*at Competitive Prices*

*Call Now!*

**01473 558854**

Monday - Friday 9am - 5pm

**24/7 EMERGENCY SERVICE Tel: 0758 269 1111**



**OUR EXPERTISE AT YOUR SERVICE**

◆INVESTMENTS◆PENSIONS◆RETIREMENT  
PLANNING ◆ESTATE PLANNING◆ETHICAL  
INVESTMENTS◆FAMILY COVER◆BUSINESS

**Tuddenham Hall Estate Office**  
Tuddenham  
Ipswich  
Suffolk  
IP6 9DD

**Tel: 01473 784430**

**Email: [info@pearsonfinancial.co.uk](mailto:info@pearsonfinancial.co.uk)**

**[www.pearsonfinancial.co.uk](http://www.pearsonfinancial.co.uk)**

**3 Dickens House**  
Guithavon Street  
Witham  
Essex  
CM8 1BJ

**Tel: 01376 503561**

**Email: [info@pearsonfinancial.co.uk](mailto:info@pearsonfinancial.co.uk)**

**[www.pearsonfinancial.co.uk](http://www.pearsonfinancial.co.uk)**

Authorised and regulated by the Financial Conduct Authority FCA No: 442021  
Directors: A.J. Keith and S. Pyne

Registered in England N°. 5560693

## **An Evening with Terry Waite in Westhorpe**

29th July 2017



You could have heard a pin drop in our packed village hall last Saturday night so enthralled were the audience listening to Terry Waite CBE. The event was made possible by one of our newer residents, Jenny Coles, who works with Terry and suggested the evening as a fundraiser for the church.

A consummate and engaging, yet at times self-effacing, speaker, Terry Waite proved to be a natural communicator. As we know him best as a successful hostage negotiator, his theme focussed on the events leading to his own capture in Lebanon in the 1980s and the years he spent as a prisoner. Despite the horrors of captivity, much of it in solitary confinement, his humour shone through as he told us the story of finally receiving a book from his guard after months of asking. It's title - 'The Great Escape'!

A man of immense courage and compassion, Terry Waite shared with us some of the insights he had gained through his experiences. He survived the years of mental and physical torture through sheer determination, sustained by hope and faith. In his head, during those years, he formulated a book which he later wrote and published. It was quite astonishing to learn that he bears no ill-will to those who held him and, indeed, is able to forgive them.

To illustrate his talk, Terry read extracts of prose and poetry from his most recent publication 'Out of the Silence'. This book is a collection of memories and reflections on the highs and lows of his life and the poetry we heard was very moving.

Terry Waite is one of the world's most respected humanitarians. Westhorpe was honoured to be able to welcome him amongst us and our visitors from surrounding parishes. I am sure most would agree that hearing Terry Waite speak was both uplifting and inspirational. It was, simply, unforgettable.

THE PINE HOUSE CO.  
HAND MADE FURNITURE  
ANY SIZE TO YOUR DESIGN

Including Hand  
Made Fitted &  
Free-Standing  
Kitchens in

OAK \* PINE \*  
RUSTIC PLANK  
\* RECLAIMED  
& DRIFTWOOD  
TIMBERS

*Gifts & Baskets*



Hand  
waxed and  
farrow & ball  
painted  
finishes

[www.thepinehousecompany.co.uk](http://www.thepinehousecompany.co.uk)

Tel/Fax: 01359 235030

[Information@thepinehousecompany.co.uk](mailto:Information@thepinehousecompany.co.uk)

Spinney Garage, Stowlangtoft near Bury St Edmunds, IP31 3JS

[www.facebook.com/ThePineHouseCompany](https://www.facebook.com/ThePineHouseCompany)

<https://twitter.com/PineHouseCo>

Open Mon-Sat 9am-5pm, Sun 10am-4pm, Closed Tuesdays.

Traditional  
and  
Contemporary  
Furniture  
*for every room of your house*

**"That time of year thou mayst in me behold**

**(Sonnet 73)" by William Shakespeare**

That time of year thou mayst in me behold  
When yellow leaves, or none, or few, do hang  
Upon those boughs which shake against the cold,  
Bare ruined choirs, where late the sweet birds sang.  
In me thou see'st the twilight of such day  
As after sunset fadeth in the west;  
Which by and by black night doth take away,  
Death's second self, that seals up all in rest.  
In me thou see'st the glowing of such fire,  
That on the ashes of his youth doth lie,  
As the deathbed whereon it must expire,  
Consumed with that which it was nourished by.  
This thou perceiv'st, which makes thy love more strong,  
To love that well which thou must leave ere long.

**"Autumn" by T.E. Hulme**

A touch of cold in the Autumn night—  
I walked abroad,  
And saw the ruddy moon lean over a hedge  
Like a red-faced farmer.  
I did not stop to speak, but nodded,  
And round about were the wistful stars  
With white faces like town children.

**"Autumn birds" by John Clare**

The wild duck startles like a sudden thought,  
And heron slow as if it might be caught.  
The flopping crows on weary wings go by  
And grey beard jackdaws noising as they fly.  
The crowds of starnels whizz and hurry by,  
And darken like a clod the evening sky.  
The larks like thunder rise and suthy round,  
Then drop and nestle in the stubble ground.  
The wild swan hurries hight and noises loud  
With white neck peering to the evening clowd.  
The weary rooks to distant woods are gone.  
With lengths of tail the magpie winnows on  
To neighbouring tree, and leaves the distant crow  
While small birds nestle in the edge below.



# SELLING PROPERTY IS WHAT WE DO, EVERYDAY!

Finding you a buyer at the best price with

REGULAR UPDATES, HONEST ADVICE AND SUPPORT

throughout the process is just the beginning of our services.

Call us to take the next step: 01359 234444

**allhomes** town and  
country

MORE THAN JUST AN ESTATE AGENT...



## St Mary's Church, Badwell Ash The Turret Clock

St. Mary's PCC with The Heritage Lottery Fund has now successfully concluded the grant to St. Mary's Church for the completion of the Turret Clock Restoration. The clock is now working and keeping relatively good time – it is after all over 300 years old! It is also striking the hours for the first time in living memory. The chiming has been set up so as not to put too much strain on the clock mechanism although the PCC think it's a little too quiet and have asked Hayward Horological, the clock restorers to see whether they can alter the way the hammer strikes the tenor bell in the tower to make it louder.

The final part of the restoration process was to install a time capsule in the clock room. The time capsule contained such items as a copy of the Hexagon, the Badwell Broadsheet, copies of two national newspapers, a copy of the report sent to the HLF on completion of the project, a Coca-Cola can, an old smart phone and a selection of photographs of the village. It will be sealed in a niche in the wall of the clock room and covered with a plaque that says "Time capsule placed here in August 2017. Please remove in August 2067".

Also connected with St. Mary's is a further project which is also being carried out with financial help from the Heritage Lottery Fund. The Badwell Ash History Society is now beginning to research the lives and families of the soldiers who served in WWI in order to create a Heritage Trail which will start from the churchyard. The History Society will be looking to locate families still living in the village whose forebears served WWI to see whether they can help in their research and perhaps provide photographs which will be displayed on the website [www.badwellashheritage.co.uk](http://www.badwellashheritage.co.uk).

If anyone wishes to contact members of The History Society to help with this project or to give them some information about their relatives who fought in WWI, please get in touch with either Pat Monk [patmm Monk@gmail.com](mailto:patmm Monk@gmail.com) or Howard Newman [howard@hanasos.co.uk](mailto:howard@hanasos.co.uk). or call 01359 258538.

Howard Newman  
September 2017

Photo: Members of the PCC watching Rev'd Philip Merry placing the time capsule in the wall niche.



### SERENITY YOGA CLASSES

Do you have a **new year's resolution** to get fit for summer? **Slim for spring?** Yoga could help!

Do you get home after work feeling **uninspired** and **laze** about knowing you should be doing something? Yoga could help!

Do you wish you could go to a class **without judgement** and **not break the bank** in going along?

**Regardless of age, size and experience, my classes will have something for you.**

**Yoga will help to strengthen tone and increase your flexibility!**

With classes in:

**THE ROOM, WOOLPIT – MONDAY PM**  
**THORPE MORIEUX VIL. HALL – WEDS PM**

**GREEN ROOM HAUGHLEY – THURS PM**  
Please do not hesitate to contact me for further details-

07930 199582

[serenityyogabethany@outlook.com](mailto:serenityyogabethany@outlook.com)

[www.serenityyogasuffolk.com](http://www.serenityyogasuffolk.com)



### LINEDANCING WITH ROSIE

**ABSOLUTE BEGINNERS CLASS**  
**WEEKLY CLASSES**

6pm—7pm

@ Westhorpe Village Hall

Church Rd, Westhorpe  
Stowmarket  
IP14 4SY

£3.50 per class

Any enquiries phone Rosie on



### WATTISFIELD TOWN ESTATE CHARITY

This Charity administers a modest income from lands given by the Rust, Osborne and other families of Wattisfield for the benefit of the inhabitants of the Parish.

We are able to give grants throughout the year, to those less well off in the Parish and those who find they are in need of financial assistance because of unexpected additional expenses.

At this time of year we have given grants to help with school educational trips or for the purchase of books for study.

Grants are also given in cases of special hardship, for example due to serious illness, accident, redundancy or bereavement. We have also given grants for unexpected travel expenses.

Residents who do find themselves in difficulty and could benefit from a little financial help may apply directly to the Charity and each case will be assessed on its own merits.

To obtain an application form please write in confidence to:

The Trustees, Wattisfield Town Estate Charity, Hall View House, Chapel Road, Wattisfield, IP22 1NU.

Charity Commission Registration No. 211095

### Carberry Plumbing and Heating

For all your domestic plumbing needs



01359 760220 or 07506706121



### COMMUNITY YOGA FOR HEALTH

Simple breathing, stretching and relaxation.  
Suitable for beginners

Thursdays 7.15-9.15 at Walsham School

Details from Julia (BWY) 01359-259688

[jdunnicliffe@btinternet.com](mailto:jdunnicliffe@btinternet.com)



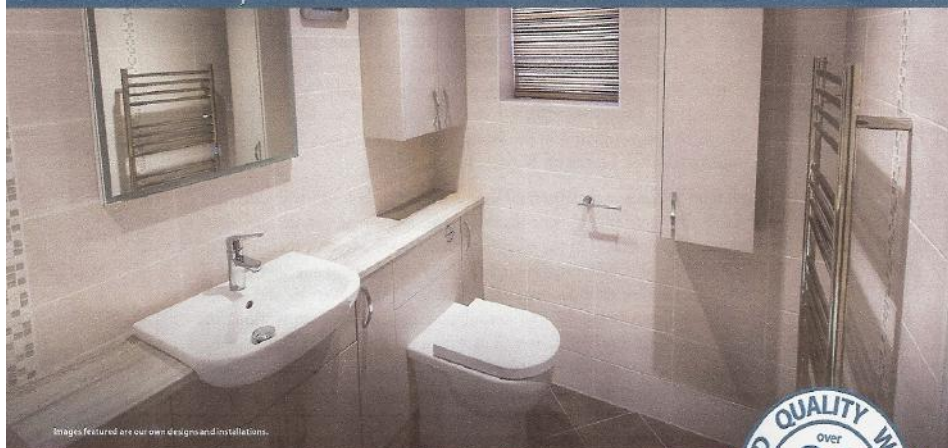


**bathrooms  
& kitchens**

Contact us today  
for your **FREE** survey

**n-b-k.co.uk**

Find us on **f** facebook and **t** twitter



Images featured are our own designs and installations.

## Unmissable savings on kitchens & bathrooms...



*Spend £10500 on your new kitchen & receive*

**FREE** Neff Dishwasher worth £535.00

**+ FREE** Karndean flooring to the value of £350.00

**+ FREE** splash-back tiles to the value of £250.00

*Spend over £5500 on your new bathroom & receive*

**FREE** Karndean flooring to the value of £175.00

**+ FREE** wall tiles to the value of £125.00

**+ FREE** LED mirror light worth £250.00

\*Ask in store for details. Offer valid on all new orders placed before February 28th 2017

We offer all these great benefits

✓ **3 years** guarantee on installations

✓ **Latest 3D CAD** software

✓ **Full project** management

✓ **Free Design & Planning**

You will always receive a **warm welcome** at our **Diss showroom**

**Opening Times**

Monday to Friday 9.00am – 5pm Saturdays 10am – 4pm

**Address** Carmel Works Park Road Diss Norfolk IP22 4AS

**Email** [diss@n-b-k.co.uk](mailto:diss@n-b-k.co.uk) **Website** [n-b-k.co.uk](http://n-b-k.co.uk)

Telephone

**01379 640812**

## *Westhorpe Gardening Club invites you to:*

*A talk by Timothy Cutler*

**“Medicinal plants and the Chelsea Physic Garden”**

**When:** Friday 20th October 2017, 7.30pm

**Where:** Westhorpe Village Hall, Church Road, Westhorpe, Stowmarket  
IP14 4SY

**Cost:** £5.00 per ticket

*A talk by Bob Flowerdew*

**“Starting Right”**

Bob is an organic gardener, and television and radio presenter. He is a regular panel member of BBC Radio 4's Gardeners Question Time. 90% of successful gardening is good husbandry: sowing, potting, transplanting, watering and harvesting. He will be talking about the importance of the basics!

**When:** Friday 21<sup>st</sup> April 2017, 7.30pm

**Where:** Westhorpe Village Hall, Church Road, Westhorpe, Stowmarket  
IP14 4SY

**Cost:** £6.50 per ticket

For tickets or further information contact **Martin Little** via  
[westhorpegarden@gmail.com](mailto:westhorpegarden@gmail.com) or call 01449 780301







## *Benefice Services August-September 2017*

### **1<sup>st</sup> OCTOBER 16<sup>th</sup> SUNDAY after TRINITY**

8.00am	Holy Communion	Walsham
11.00am	Family Harvest Festival	Walsham
11.00am	Harvest Thanksgiving	Wattisfield URC
3.00pm	Family Harvest Festival	Westhorpe
6.30pm	Harvest Thanksgiving	Wattisfield URC

### **2<sup>nd</sup> OCTOBER**

7.15pm	Harvest Thanksgiving	Wattisfield URC
	(Followed by fun charity auction in aid of LINC)	

### **8<sup>th</sup> OCTOBER 17<sup>th</sup> SUNDAY after TRINITY**

8.00am	Holy Communion	Walsham
9.30am	Family Communion	Finningham
10.30am	Songs of Praise	Walsham
11.00am	Morning Worship	Wattisfield URC

### **15<sup>th</sup> OCTOBER 18<sup>th</sup> SUNDAY after TRINITY**

8.00am	Holy Communion	Walsham
10.00am	Family Communion	Badwell Ash
11.00am	Holy Communion	Wattisfield URC
6.00pm	Evensong	Westhorpe

### **22<sup>nd</sup> OCTOBER 19<sup>th</sup> SUNDAY after TRINITY**

8.00am	Holy Communion	Walsham
10.00am	Family Communion	Finningham
11.00am	Matins	Walsham
11.00am	Morning Worship	Wattisfield URC

### **29<sup>th</sup> OCTOBER LAST after TRINITY/ BIBLE SUNDAY**

8.00am	Holy Communion	Walsham
10.00am	Benefice Communion	Westhorpe
11.00am	Morning Worship	Wattisfield URC
3.00pm	Evensong - said	Walsham

### **1<sup>st</sup> NOVEMBER ALL SAINTS DAY**

9.30am	Holy Communion	Walsham
--------	----------------	---------

### **2<sup>nd</sup> NOVEMBER ALL SOULS DAY/ FAITHFUL DEPARTED**

7.00pm	Compline/ Reading of Names	Walsham
--------	----------------------------	---------

## *Benefice Services August-September 2017*

### **5<sup>th</sup> NOVEMBER 4<sup>th</sup> SUNDAY before ADVENT**

8.00am	Holy Communion	Walsham
10.00am	Holy Communion	Westhorpe
10.30am	Holy Communion	Walsham
11.00am	Holy Communion	Wattisfield URC

### **12<sup>th</sup> NOVEMBER REMEMBRANCE SUNDAY \*\*\***

8.00am	Holy Communion	Walsham
10.15am	Remembrance Service	Badwell Ash
11.00am	Remembrance Service	Wattisfield URC
3.00pm	Evensong-said	Walsham

\*\*\* Remembrance Sunday Services in Walsham, Finningham and Westhorpe will follow the Act of Remembrance at the village war memorials. Please assemble for 10.50am. More information on this is in "Forthcoming Services".

### **19<sup>th</sup> NOVEMBER 2<sup>nd</sup> SUNDAY before ADVENT**

8.00am	Holy Communion	Walsham
10.00am	Holy Communion	Badwell Ash
10.30am	Songs of Praise	Walsham
11.00am	Morning Worship	Wattisfield URC
3.00pm	Evensong	Westhorpe

### **26<sup>th</sup> NOVEMBER CHRIST the KING**

8.00am	Holy Communion	Walsham
10.00am	Family Worship/ Workshop	Finningham
11.00am	Matins	Walsham
11.00am	Morning Worship	Wattisfield URC

### **3<sup>rd</sup> DECEMBER ADVENT SUNDAY**

8.00am	Holy Communion	Walsham
10.00am	Christingle	Walsham
10.00am	Holy Communion	Westhorpe
11.00am	Holy Communion	Wattisfield URC
7.00pm	Compline	Walsham

**Wednesday Morning Eucharist In the Priory Room at 09.30 followed by Refreshments and Fellowship**

October:	4th, 11th, 18th, 25th
November:	1st, 8th, 15th, 22nd, 29th